

SAVING OUR SPECIES

Eastern Bristlebird Conservation

The many translocations





Background

- Semi-flightless
- Seven+ main populations – isolated, habitats differ
 - Nthn & captive, Cataract, Budderoo, Bherwerre, Beecroft, Nadgee/Croajingalong
- 2000-3000 individuals
- Other bristlebirds (western & rufous)

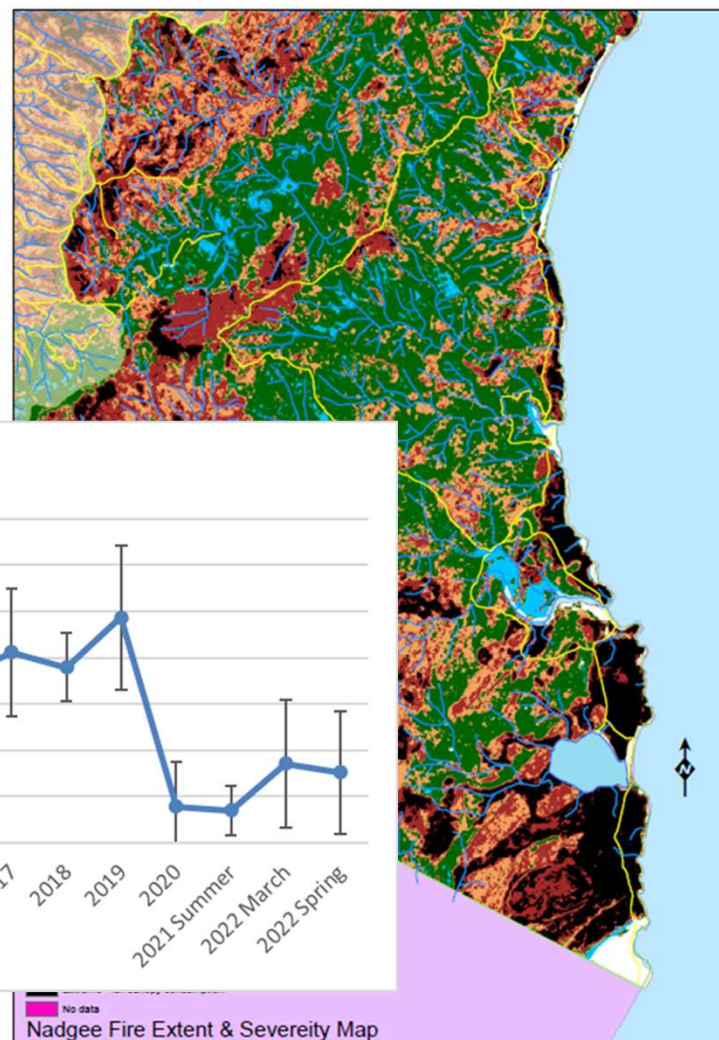


Photo: Chris Grounds



2019-20 bushfires

- One population impacted (Nadgee)
- Croajingalong not impacted
- Extreme severity (canopy consumption)
- Recovery happening





EBB translocations

- Why move them?
- Beecroft Peninsula
- Cataract Dam
- Northern population
- Wilsons Promontory





Victorian translocation

- New population in Wilsons prom (revised)
- Lead by DELWP - multi-agency
- Stage one successful (17 birds, team effort)



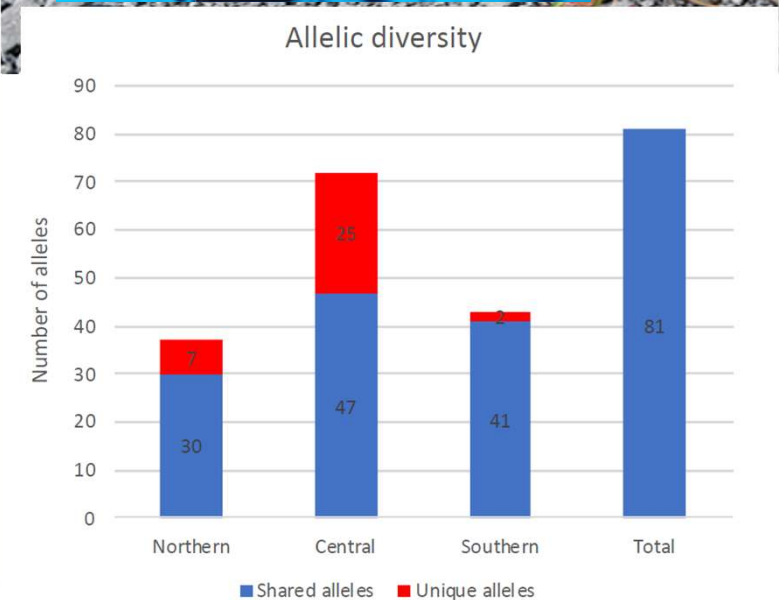
Other EBB conservation work

- Monitoring all populations
- Southern connectivity
- Genetic rescue
- Northern population PL habitat



6

Figure 6: Eastern Bristlebird records and potential connectivity links between the two southern subpopulations





THANK YOU



Photo: Dean Portelli